



# LED SEAMLESS VAPOR PROOF FIXTURE

► **DESIGN** - LED SEAMLESS VAPOR PROOF FIXTURE has a waterproof polycarbonate body with a frosted lens, making this fixture impact resistant. Design of the fixture allows to connect multiple fixtures together. Comes with a 4ft cord to make the installation process easier. It is designed to operate on 120-277V circuits with a 0-10V dimmable driver.

► **BATTERY BACK-UP** - The built-in battery back-up provide 90 minutes of power in case of emergency.

► **COLOR AND POWER SELECTABLE** - You can choose either a 3,500K neutral white, 4,000K cool white or 5,000K daylight color temperature, and change the power with a simple switch.

► Surge protection 6kV protects the fixture from voltage spikes and current surges.

► **APPLICATION** - Perfect commercial or industrial solution for parking garages, carports, stairwells, tunnels, car washes, and many other applications. It is also Wet Locations rated.

► **ADVANTAGES** - With calculated lifespan up to 80 000 hours, these fixtures are made to last decades under normal operation! ASD provides a 5-year limited warranty along with UL and DLC Standard certifications to guarantee top quality products and safety!

Catalog number	
Notes	
Type	



Model	Type	Watts	Voltage	Dimmable	Lumens	CCT	Dimensions (LxWxH)	Option
ASD-LVP2SM-4A56AC	4 ft	32/48/56W	120-277 V	0-10 V	4,471/6,155/7,253 lm	3CCT (3,500/4,000/5,000 K)	48-1/8" x 3-9/16" x 3-3/16"	-
ASD-LVP2SM-8A120AC	8 ft	64/96/120W	120-277 V	0-10 V	9,258/13,773/17,359 lm	3CCT (3,500/4,000/5,000 K)	94-3/4" x 3-9/16" x 3-3/16"	-
<b>LVP2SM-EM WITH BATTERY BACK-UP</b>								
ASD-LVP2SM-4A56AC-10EM	4 ft	32/48/56W	120-277 V	0-10 V	4,772/6,109/7,140 lm	3CCT (3,500/4,000/5,000 K)	48-1/8" x 3-9/16" x 3-3/16"	10W Battery back-up
ASD-LVP2SM-8A120AC-20EM	8 ft	64/96/120W	120-277 V	0-10 V	9,414/14,025/17,325 lm	3CCT (3,500/4,000/5,000 K)	94-3/4" x 3-9/16" x 3-3/16"	20W Battery back-up

## ORDERING INFORMATION

Model	UPC	Pcs. per carton	Carton size	Carton weight	GTIN 14
ASD-LVP2SM-4A56AC	810050735513	9	49.6" x 11.8" x 12"	56 lbs	10810050735510
ASD-LVP2SM-8A120AC	810050735520	6	96.3" x 11.8" x 8.9"	58.9 lbs	10810050735527
<b>LVP2SM-EM WITH BATTERY BACK-UP</b>					
ASD-LVP2SM-4A56AC-10EM	810050735537	9	49.6" x 11.8" x 12"	61 lbs	10810050735534
ASD-LVP2SM-8A120AC-20EM	810050735544	6	96.3" x 11.8" x 8.9"	69.4 lbs	10810050735541

For most up-to-date spec sheets please refer to [asd-lighting.com](http://asd-lighting.com)



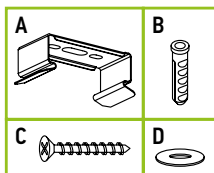
# LED SEAMLESS VAPOR PROOF FIXTURE

## PRODUCT SPECIFICATIONS:

Construction & Materials				Electrical system				
Housing	PC			Input voltage	120-277 V			
Lens	PC			Max input current	ASD-LVP2SM-4A56AC	0.55 A		
Finish	White				ASD-LVP2SM-8A120AC	1.15 A		
Weight	ASD-LVP2SM-4A56AC	5.4 lbs (2.4 kg)			ASD-LVP2SM-4A56AC-10EM	0.55 A		
	ASD-LVP2SM-8A120AC	7.9 lbs (3.6 kg)			ASD-LVP2SM-8A120AC-20EM	1.15 A		
	ASD-LVP2SM-4A56AC-10EM	6 lbs (2.7 kg)		Inrush current (Action time)	ASD-LVP2SM-4A56AC	40 A (0.46 S)		
	ASD-LVP2SM-8A120AC-20EM	9.7 lbs (4.4 kg)			ASD-LVP2SM-8A120AC	80 A (0.58 S)		
			ASD-LVP2SM-4A56AC-10EM		40 A (0.46 S)			
			ASD-LVP2SM-8A120AC-20EM	80 A (0.58 S)				
<b>Environmental system</b>				Off state power	0W			
Work environment	Suitable for Wet Locations, IP66			Power consumption	ASD-LVP2SM-4A56AC	32/48/56W		
Operating temperature	-40°F to 122°F (-40°C to 50°C)				ASD-LVP2SM-8A120AC	64/96/120W		
L-70 Life	R > 54,000 hrs; C > 80,000 hrs				ASD-LVP2SM-4A56AC-10EM	32/48/56W		
			ASD-LVP2SM-8A120AC-20EM		64/96/120W			
<b>Optical system</b>				Power factor	> 0.9			
Luminous flux	ASD-LVP2SM-4A56AC	4,471/6,155/7,253 lm		Output voltage	ASD-LVP2SM-4A56AC	93-115 V		
	ASD-LVP2SM-8A120AC	9,258/13,773/17,359 lm			ASD-LVP2SM-8A120AC	95-107 V		
	ASD-LVP2SM-4A56AC-10EM	4,772/6,109/7,140 lm			ASD-LVP2SM-4A56AC-10EM	93-115 V		
	ASD-LVP2SM-8A120AC-20EM	9,414/14,025/17,325 lm			ASD-LVP2SM-8A120AC-20EM	95-107 V		
Color temperature	3CCT switch (3,500/4,000/5,000 K), 5,000 K by default			Max output current	ASD-LVP2SM-4A56AC	0.46 A		
CRI	> 80				ASD-LVP2SM-8A120AC	1.05 A		
			ASD-LVP2SM-4A56AC-10EM		0.46 A			
			ASD-LVP2SM-8A120AC-20EM		1.05 A			
<b>Dimming compatible controls</b>				Surge protection DM/CM	4 kV / 6 kV			
Brand	Leviton	Legrand	Lutron	<b>Regular and voluntary certifications</b>				
Models	IP710-DLZ/NFTV	H4FBL3PW	DVSTV-WH	5-year limited warranty				
				DesignLights Consortium (DLC) listed (Classification: Standard)				
				UL certified E473804				

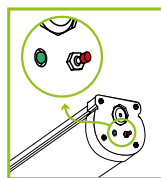
## PACKAGE CONTENTS:

Description	Q-ty
LED Seamless Vapor Proof Fixture	1
Mounting bracket (A)	2
Mounting screws (B)	4
Plastic anchor (C)	4
Flat washer (D)	4
Box	1



## BUILT-IN BATTERY BACK-UP INFORMATION

Specifications	Model: BLD-CM20H-1500400
Input voltage	100-277 V 50/60 Hz
Warranty	5 years
Indicator light	Illuminated test switch, indicator light
Battery	Li-ion
Battery charging current	250 mA
Charging time	≥ 24 hours



**Test button operation:** Press test button to change from charging mode to emergency mode. Release test button to go back to the normal mode.

**Back-up mode operation:** When green light is on, back-up battery is charging in AC mode. When it detects AC power outage, fixture will switch to back-up mode and indicator light will turn off.

Model	Battery capacity	Max emergency output power	EM lumens	Emergency current	Emergency operation time	Battery voltage	Full charge/discharge cycles
ASD-LVP2SM-4A56AC-10EM	3,000 mA * 4	10W	1,246 lm	80 mA	≥ 90 minutes	7.4 V	500 cycles
ASD-LVP2SM-8A120AC-20EM	4,000 mA * 6	20W	2,301 lm	170 mA	≥ 90 minutes	11.1 V	500 cycles

For most up-to-date spec sheets please refer to [asd-lighting.com](http://asd-lighting.com)



# LED SEAMLESS VAPOR PROOF FIXTURE

## INSTALLATION GUIDE

### IMPORTANT SAFETY INFORMATION:

Please read all the instructions below before installation.

- ▶ Make sure that the supply voltage corresponds to the rated product voltage.
- ▶ The product must be installed by a qualified electrician in accordance with the National Electrical Code and corresponding local codes.
- ▶ If the product is damaged, do not use it.
- ▶ All wiring connections should be capped with UL approved wire connectors.
- ▶ For surface mount there are two stainless steel brackets included.
- ▶ This fixture is intended to be connected to a properly installed and grounded UL listed junction box with suitable strain relief means for power cord. The junction box is not included, should be purchased separately.

### ⚠ WARNING

**RISK OF PERSONAL INJURY – READ and follow all WARNINGS and installation instructions.** Keep or give to the owner for future reference.

**Risk of cuts:** Wear gloves to prevent cuts or abrasions when removing from carton, handling, installing, and maintaining this product.

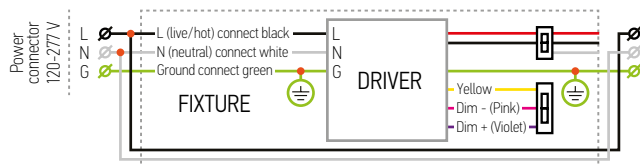
**Risk of electric shock:** This product must be installed in accordance with the applicable installation code by a person familiar with the construction and operation of the product and the hazards involved.

**Risk of Fire:** Minimum 194°F supply conductors. Consult a qualified electrician to ensure correct branch circuit conductor.

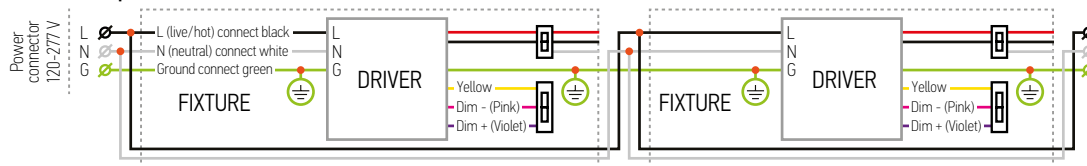
ASD® assumes no responsibility for claims arising out of improper or careless installation or handling of this product.

### ELECTRICAL SCHEMATIC DIAGRAM:

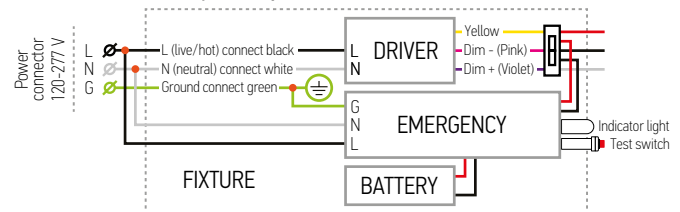
#### LVP2SM



#### LVP2SM multiple fixture connection

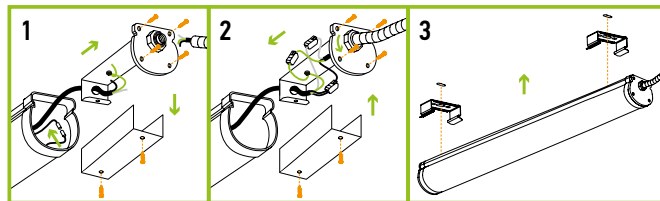


#### LVP2SM-EM with battery back-up



### INSTALLATION STEPS:

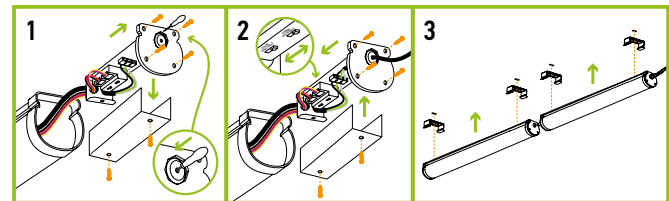
1. Remove the four screws off of the end-cap. Pull out the end-cap along with the junction box. Remove the cover of the junction box. The battery back-up will be unplugged when received, plug in battery back-up and the fixture using connector.
2. Insert the power cord into the junction box through the IP65 plug\*. Connect the wires: Black to Black, White to White, Green to Green. Choose power output and color temperature needed using the switch. Close the cover of the junction box, insert it back into the fixture, tighten the screws of the end-cap.
3. Secure the fixture to the ceiling/wall with mounting brackets.



\* Note: plug suitable for up to 1/2" wires.

### CONNECTING MULTIPLE FIXTURES:

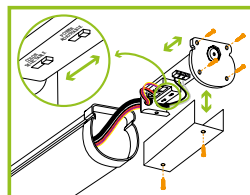
1. Remove the four screws off of the end-cap, pull out the end-cap along with the junction box, remove the cover of the junction box and remove the small cut-hole in the gasket.
2. Insert the power cord from the other fixture into the junction box. Connect the wires: Black to Black, White to White, Green to Green. Choose power output and color temperature using the switch. Close the cover of the junction box, insert it back into the fixture, tighten the screws of the end-cap.
3. Secure the fixtures to the ceiling/wall with mounting brackets.



\* Multiple fixtures with different sizes and wattages can be linked together, the total wattage must not exceed 500W (120V) / 1200W (277V).

### POWER AND COLOR TEMPERATURE SETTINGS:

Open the end-cap on the gasket side, pull out and open the junction box and use the switch to adjust power output and color temperature. Then, close junction box, slide it back into the fixture and tighten the screws on the end-cap.



For most up-to-date spec sheets please refer to [asd-lighting.com](http://asd-lighting.com)