

LED SLIM FIT RECESSED DOWNLIGHTS - CCT SELECTABLE INSTALLATION INSTRUCTIONS

Items:
RDL/4RND/9/5CTS RDL/6RND/12/5CTS
RDL/6RND/12HL/5CTS RDL/8RND/18/5CTS

! Caution READ AND FOLLOW ALL SAFETY INSTRUCTIONS

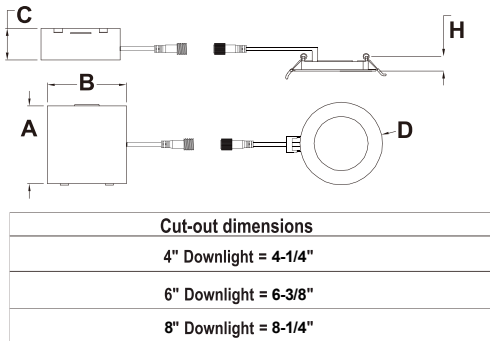
1. DANGER- Risk of shock- Disconnect power before installation.
2. This luminaire must be installed in accordance with the NEC or your local electrical code.
3. Suitable for wet location and in ambient temperatures not exceeding 104°F
4. Not for use in hazardous environments
5. Min 167°F supply conductors
6. This luminaire is rated for 90-130V/AC 50/60HZ only.
7. Do not install if lens is cracked, or fixture is damaged in any way

Product data

Voltage: 90-130VAC
 Frequency: 50/60Hz
 Power factor: ≥ 0.9
 Operating temperature: 14°F to 104°F

Dimming- This unit is designed to be compatible with most leading-edge incandescent or LED style dimmers. (Dimming range 100% - 5%). Fixture performance may vary depending on dimmer manufacturer and circuit loading. For an up to date dimmer list visit www.topaz-usa.com.

Dimensions

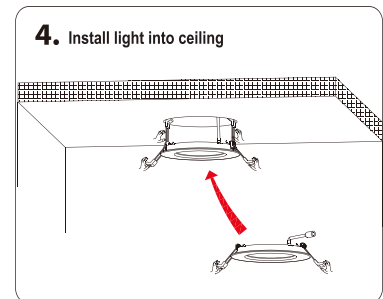
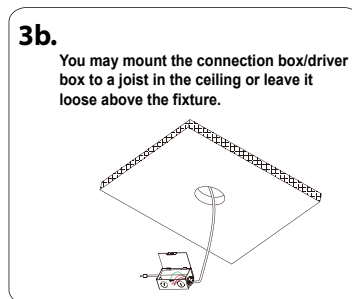
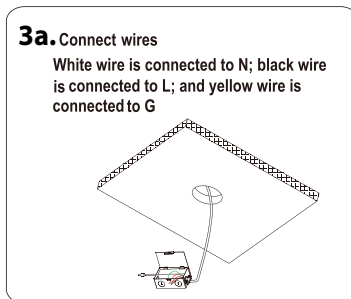
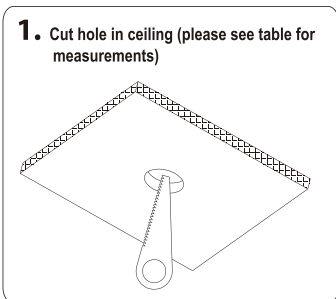
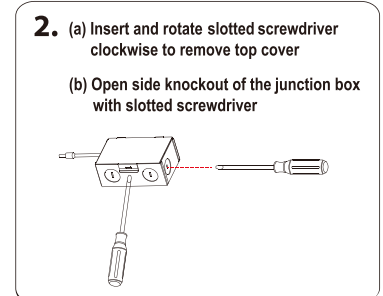
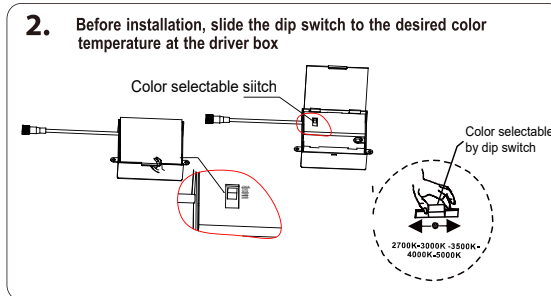


Model#	Driver			Luminaire	
	A	B	C	D	H
RDL/4RND/9/5CTS	3.43"	3.46"	1.3"	4.8"	0.71"
RDL/6RND/12/5CTS	3.43"	3.46"	1.3"	6.8"	0.83"
RDL/6RND/12HL/5CTS	3.43"	3.46"	1.3"	6.8"	0.83"
RDL/8RND/18/5CTS	3.43"	3.46"	1.3"	8.66"	0.66"

Installation steps

*Note -Slide dip switch to proper CCT setting before installing

1. Turn Power off at breaker or fuse before starting installation
2. Cut hole in ceiling according to dimensions above
3. Connect AC wire
4. Install fixture into ceiling
5. Re-connect power, turn on fixture; installation complete



Our Slim Recessed Downlights can be used in drop ceilings if tile is capable of supporting the load. Use installation frame-in kits (RDL4-FRAME KIT or RDL6-FRAME KIT) to provide support as necessary.