



## KT-SLFLED500-S1-XX-YM-750-VDIM

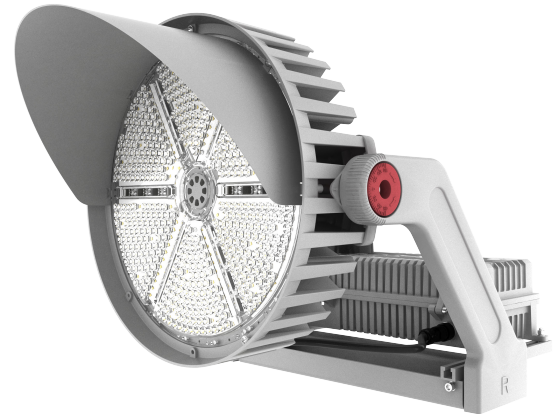
### SPORTS LIGHT FLOOD

#### DESCRIPTION

500W Sports Light Flood | 5000K | Multiple Beam Angle Options |  
120–277V Input | Gray Housing

#### APPLICATION

High power, wide flood, pole mount illumination needs (municipal parks and baseball fields, high school football stadiums, driving ranges, rodeos, ski resorts, etc.)



#### PRODUCT FEATURES

- Heavy duty die cast aluminum housing in gray finish offers a durable and modern aesthetic while carrying inspiration from existing legacy fixture solutions. Optimized for HID replacement needs
- Precision crafted optics that ensure uniform, proper lighting. Available in multiple beam angle options (30° standard, 20° and 40° optional)
- Glare shield included in packaging. Easy install for use as required by site demands
- Comes with shorting cap and integrated NEMA/ANSI C136.41 7 pin twist lock receptacle
- Designed for install as a single assembly or with remote driver box. Allows for on site flexibility and lower EPA ratings
- Compatible with yoke mount bracket (pre installed) and slip fitter mount, KT-SLFLED-SF-S1-KIT (sold separately)
- Fixture mountable laser accessory available for fixture aiming, KT-SLFLED-LASER-G (sold separately)
- Ambient operating temperature: –40°C/–40°F to 50°C/122°F
- Powered by Keystone 0–10V dimming LED driver
- UL Certified, IP65 rated
- Power factor: >0.95
- THD: <20%
- LED chip lifetime: L70 >100,000 hrs @ 25°C/77°F ambient fixture temperature
- Meets FCC Part 15, Part B, Class A standards for conducted and radiated emissions

#### DIMENSIONS AND WEIGHTS

Carton Dimensions	20.08"L x 21.65"W x 20.08"H
Carton Weight	41.01 lbs
Total Fixture Weight	38.58 lbs
Fixture Head Weight	26.54 lbs
Fixture Driver Box Weight	12.04 lbs

#### PRODUCT SPECIFICATIONS

Catalog Number	Wattage	CCT	Lumens	Efficacy	Input Voltage	Dimming	Beam Angle	CRI	DLC	Legacy Equivalent
KT-SLFLED500-S1-20-YM-750-VDIM	500W	5000K	70000	140 lm/W	120–277V	0–10V	20°	>70	Y	1500W MH
KT-SLFLED500-S1-30-YM-750-VDIM							30°			
KT-SLFLED500-S1-40-YM-750-VDIM							40°			

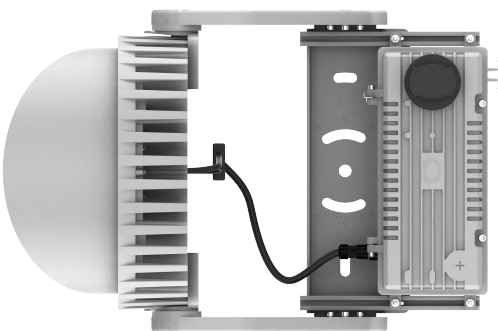
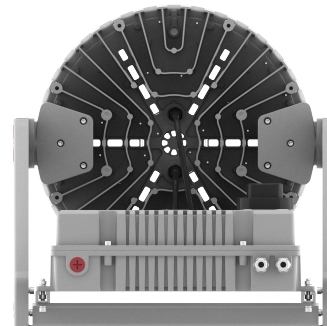
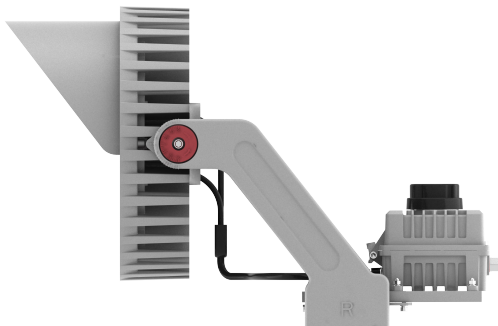
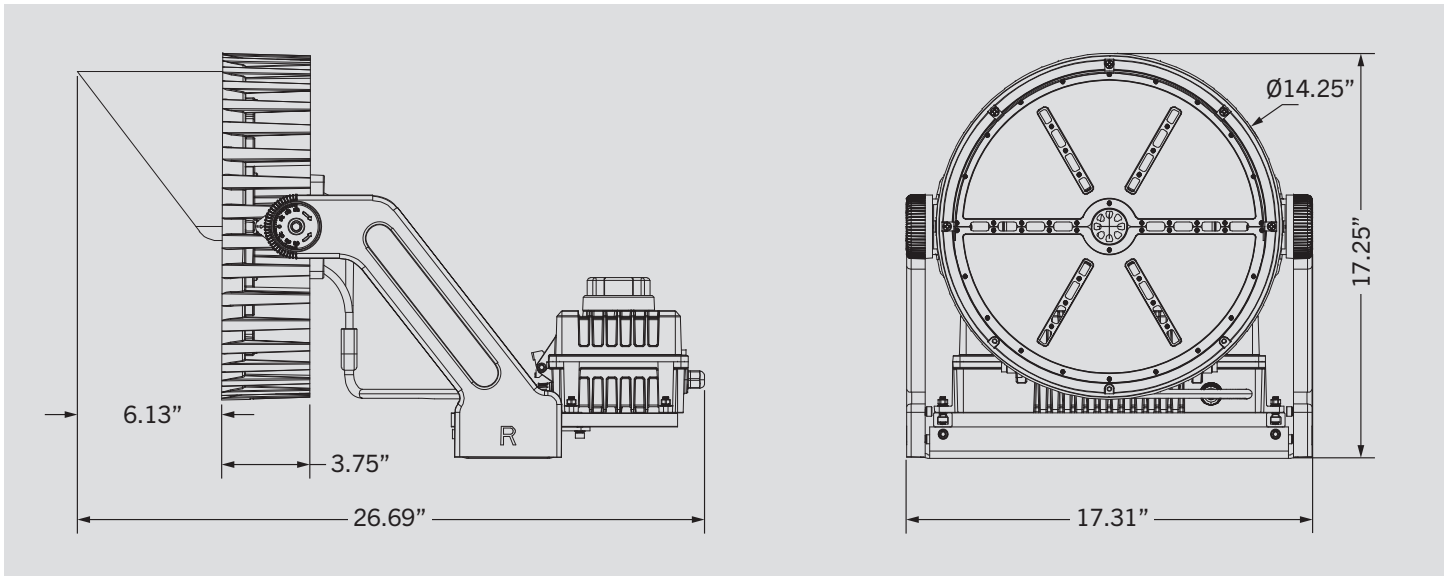
Note: Fixtures with 20° and 40° beam angles are available and assembled to order. Lead times may apply. Please see catalog number breakdown and product specification for full ordering code details

# KT-SLFLED500-S1-XX-YM-750-VDIM

## SPORTS LIGHT FLOOD

### PHYSICAL SPECIFICATIONS

WITH DRIVER BOX ATTACHED

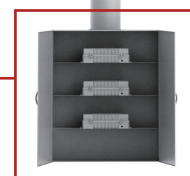
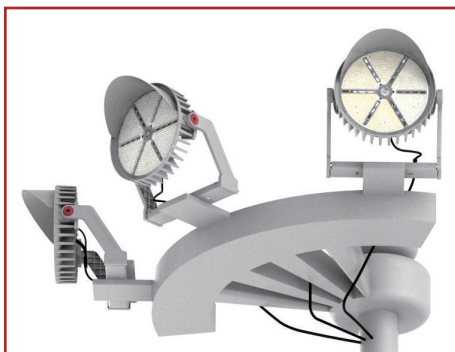
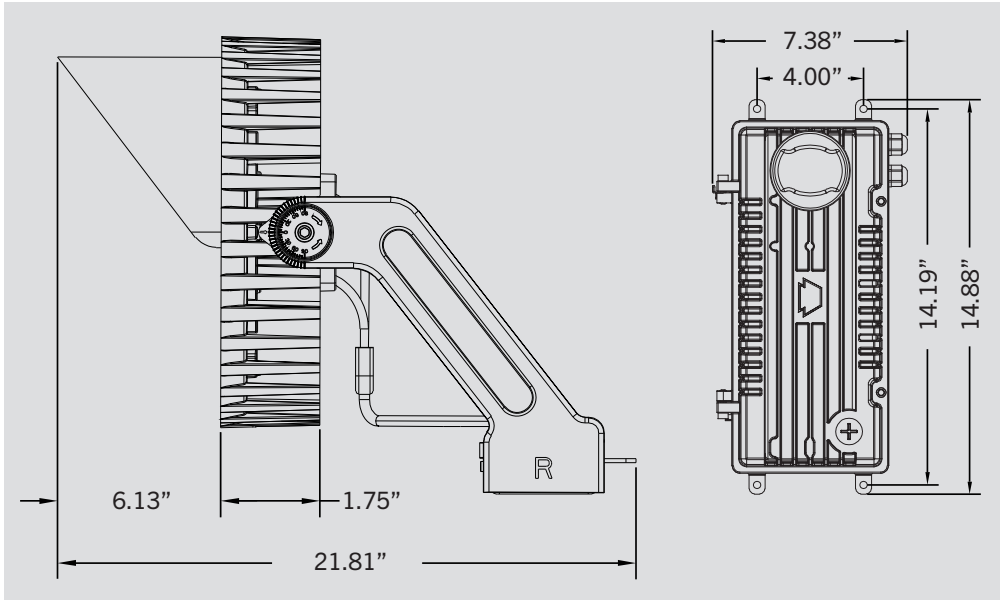


# KT-SLFLED500-S1-XX-YM-750-VDIM

## SPORTS LIGHT FLOOD

### PHYSICAL SPECIFICATIONS

WITH DRIVER BOX SEPARATED



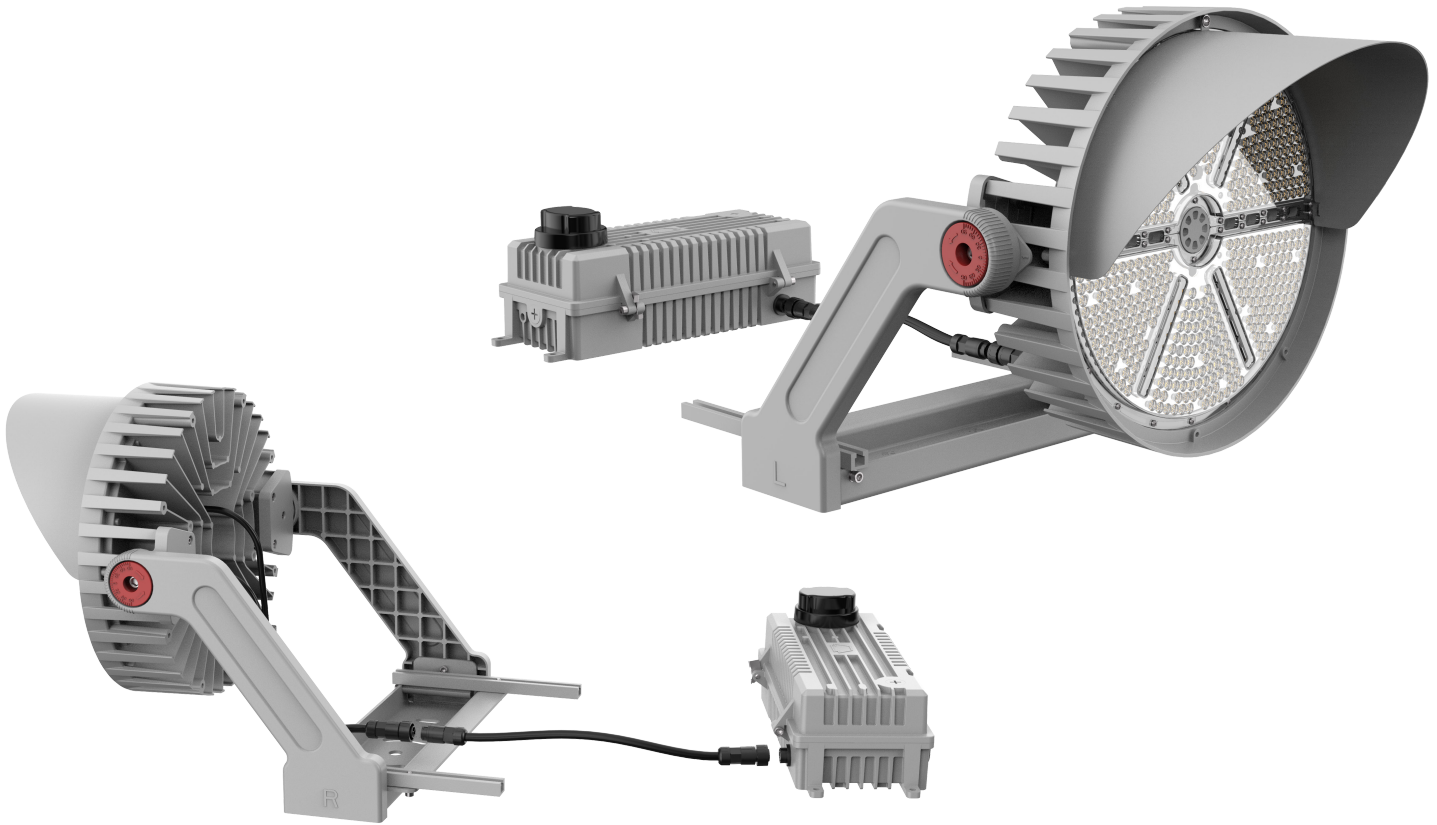
Note: Maximum cord length is 50 m / 164 ft

Note: Images are for reference only. Contact Keystone with questions regarding remote mounting and enclosures

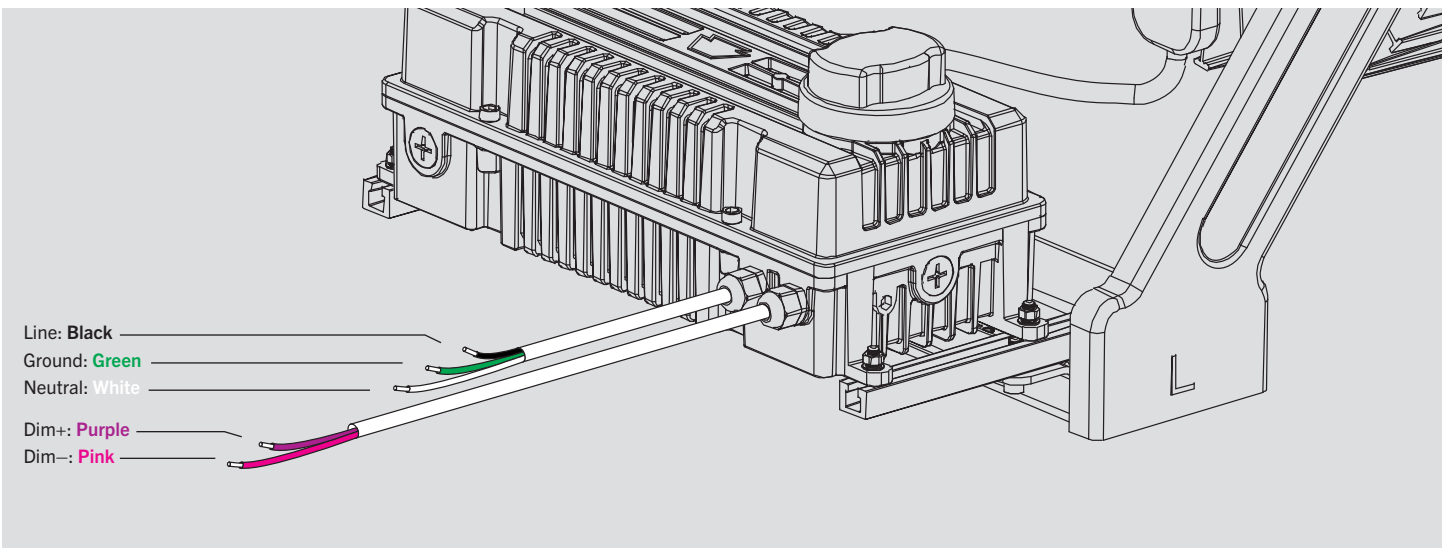
# KT-SLFLED500-S1-XX-YM-750-VDIM

## SPORTS LIGHT FLOOD

WITH DRIVER BOX SEPARATED



### WIRING DIAGRAM



Note: Input and dimming wires extend 3 ft from driver box

# KT-SLFLED500-S1-XX-YM-750-VDIM

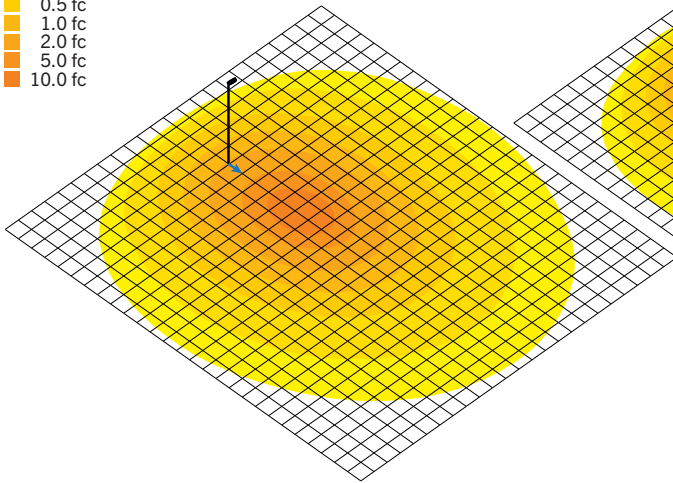
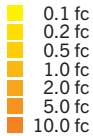
## SPORTS LIGHT FLOOD

### LIGHT DISTRIBUTION PATTERN

Photometric layouts for general reference only. All fixtures are pointed at 45° below horizontal. Each square is 10 ft x 10 ft

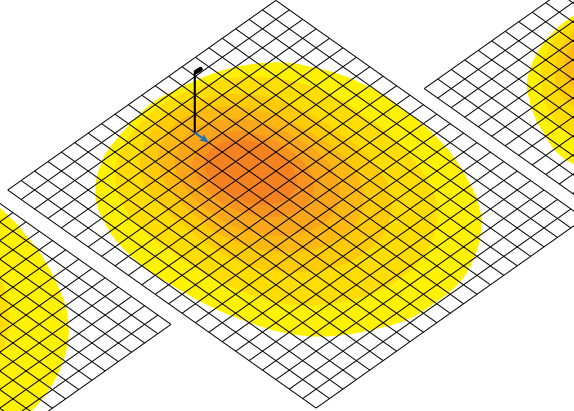
#### 20° BEAM ANGLE

Pole-mounted at 60'



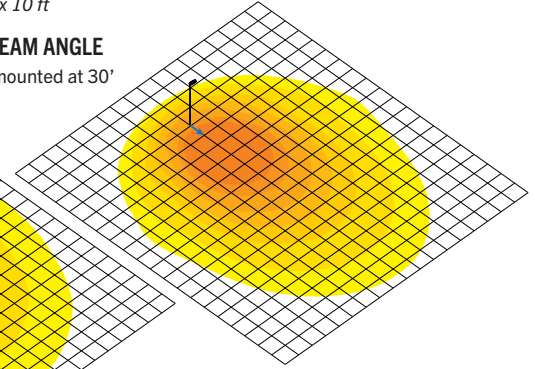
#### 30° BEAM ANGLE

Pole-mounted at 45'



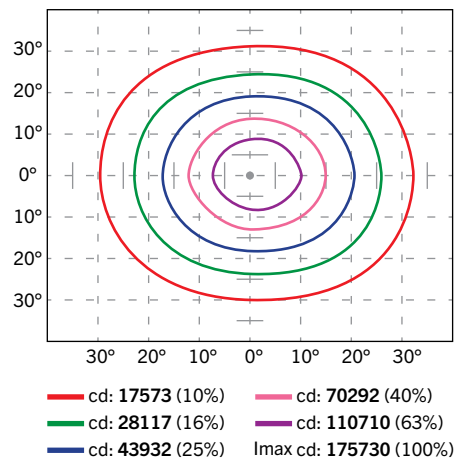
#### 40° BEAM ANGLE

Pole-mounted at 30'

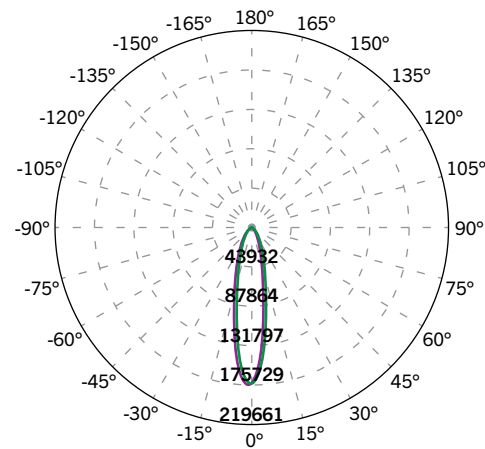


### PHOTOMETRIC SPECIFICATIONS (20° BEAM ANGLE)

#### ISOCANDELA PLOT



#### LUMINOUS INTENSITY DISTRIBUTION



Average diffuse angle (50%) : 22°  
 Unit: cd

1 Violet C0-C180  
 2 Green C90-C270

#### FLUX DISTRIBUTION

Zone	Lumens	% Luminaire
<b>Forward Light</b>	<b>32512</b>	<b>48.5%</b>
0°-30°	20640	30.8%
30°-60°	9439	14.1%
60°-80°	2284	3.4%
80°-90°	149	0.2%
<b>Back Light</b>	<b>33581</b>	<b>50.1%</b>
0°-30°	21327	31.8%
30°-60°	9728	14.5%
60°-80°	2365	3.5%
80°-90°	161	0.2%
<b>Up Light</b>	<b>964</b>	<b>1.4%</b>
90°-100°	76	0.1%
100°-180°	888	1.3%

(Photometric Specifications continued on next page)

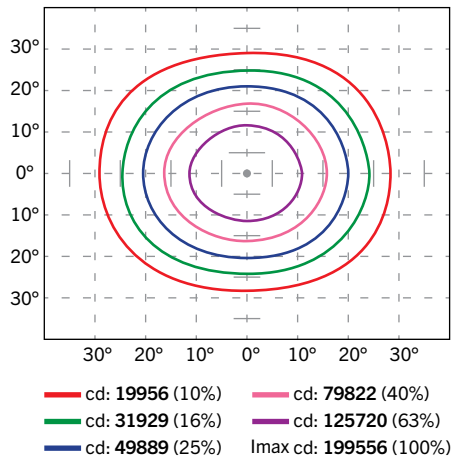


# KT-SLFLED500-S1-XX-YM-750-VDIM

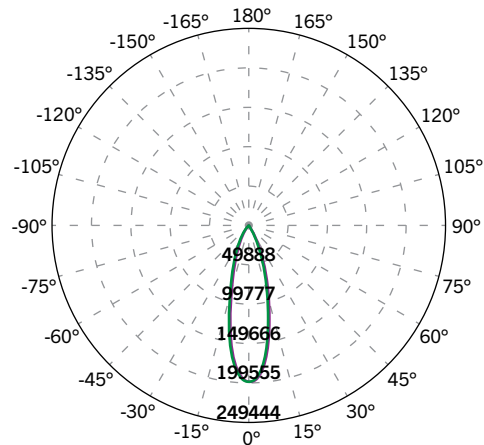
## SPORTS LIGHT FLOOD

### PHOTOMETRIC SPECIFICATIONS (30° BEAM ANGLE)

ISOCANDELA PLOT



LUMINOUS INTENSITY DISTRIBUTION



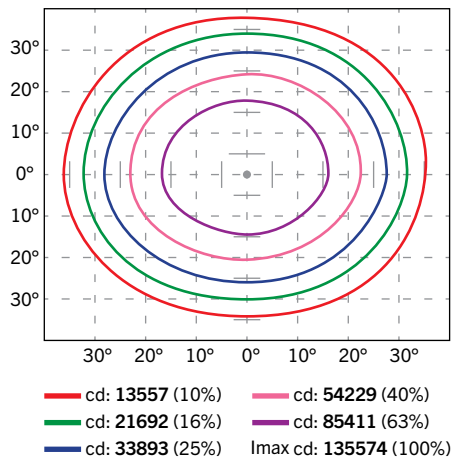
Average diffuse angle (50%) : 27.9°  
 Unit: cd

FLUX DISTRIBUTION

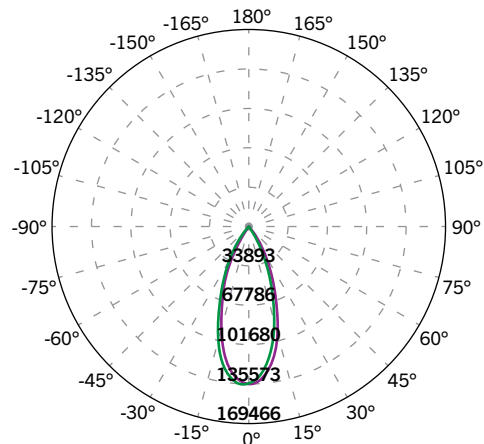
Zone	Lumens	% Luminaire
<b>Forward Light</b>	<b>35378</b>	<b>49.8%</b>
0°-30°	27365	38.5%
30°-60°	6662	9.4%
60°-80°	1281	1.8%
80°-90°	70	0.1%
<b>Back Light</b>	<b>35651</b>	<b>50.2%</b>
0°-30°	27576	38.8%
30°-60°	6767	9.5%
60°-80°	1247	1.8%
80°-90°	61	0.1%
<b>Up Light</b>	<b>0</b>	<b>0.0%</b>
90°-100°	0	0.0%
100°-180°	0	0.0%

### PHOTOMETRIC SPECIFICATIONS (40° BEAM ANGLE)

ISOCANDELA PLOT



LUMINOUS INTENSITY DISTRIBUTION



Average diffuse angle (50%) : 39.6°  
 Unit: cd

FLUX DISTRIBUTION

Zone	Lumens	% Luminaire
<b>Forward Light</b>	<b>34734</b>	<b>46.0%</b>
0°-30°	26728	35.4%
30°-60°	7118	9.4%
60°-80°	825	1.1%
80°-90°	62	0.1%
<b>Back Light</b>	<b>39748</b>	<b>52.7%</b>
0°-30°	30347	40.2%
30°-60°	8516	11.3%
60°-80°	821	1.1%
80°-90°	64	0.1%
<b>Up Light</b>	<b>986</b>	<b>1.3%</b>
90°-100°	61	0.1%
100°-180°	925	1.2%





# KT-SLFLED500-S1-XX-YM-750-VDIM

## SPORTS LIGHT FLOOD

### EPA SPECIFICATIONS

#### Small-Size Fixture Housing

Conditions: Horizontal winds only for calculations. Worst case total projected area used for calculations. All drag coefficients are set as worst case 1.2. For details on exact EPA calculations and assumptions, please contact [productsupport@keystonetech.com](mailto:productsupport@keystonetech.com)

EPA Calcs (1.2*ft^2   View)			Single Fixture	2 Fixtures Side-by-Side	3 Fixtures Side-by-Side
Mounting Application	Fixture Position	Housing Size			
<b>Plate Mount</b> 	45°	S (500W)	1.77 sq. ft.	3.53 sq. ft.	5.30 sq. ft.

### ACCESSORIES

#### SENSORS

Field-Installable / Field-Use ONLY (purchased separately)

✓	CATALOG NUMBER	DESCRIPTION	COLOR	UPC	EASY CODE
	KT-TLP-UV-3PN	NEMA-Type 3-Pin Photocell; 120–277V; 1800VA max	Blue	843654131825	NQT-46



120-277V Photocell  
KT-TLP-UV-3PN

#### CORD SETS

Field-Installable / Field-Use ONLY (purchased separately)

✓	CATALOG NUMBER	DESCRIPTION	UPC	EASY CODE
	KT-SLFLED-EC-35	35' extension cord to remote mount LED driver for SLFLED fixtures	843654154992	OKK-79
	KT-SLFLED-EC-65	65' extension cord to remote mount LED driver for SLFLED fixtures	843654155005	QCB-67



35' Extension Cord  
KT-SLFLED-EC-35

#### MOUNTS AND BRACKETS

Field-Installable / Field-Use ONLY (purchased separately)

✓	CATALOG NUMBER	DESCRIPTION	UPC	EASY CODE
	KT-SLFLED-SF-S1-KIT	Slip fitter mount kit for Series 1 Sports Light Flood, Small Housing. Fits 2 3/8" tenon. Gray	843654154930	JWV-40



Slip Fitter Mount Kit  
KT-SLFLED-SF-S1-KIT

Field-Installable / Field-Use ONLY (purchased separately)

✓	CATALOG NUMBER	DESCRIPTION	UPC	EASY CODE
	KT-SLFLED-LASER-G	Green laser pointer for Sports Light Flood aiming. Includes hardware to mount to SLFLED fixtures	843654155012	ESD-34



Green Laser Pointer  
KT-SLFLED-LASER-G

Note: Each above item has a corresponding specification sheet with technical drawings. Please visit [keystonetech.com](http://keystonetech.com) for details

