

## BROADCAST LED FLOODLIGHT

PID: SL923FLF



### APPLICATIONS

ALLEYWAYS  
WALKWAYS  
MAN DOORS  
FLAG POLES  
EXTERIOR OF BUILDINGS

### SPECIFICATIONS

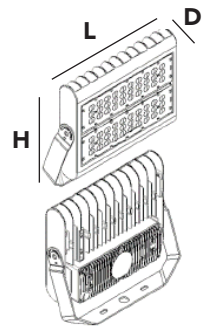
- **Construction:** ADC12 Aluminum heat sink; Bronze powder coating; High-lumen clear lens, LUMILEDS LED chips;
- **Operating Temperature:** -40°F to 104°F (-40°C to 40°C)
- **Energy Data:** Driver: 100-277V; Power Factor >.90; THD <20%;
- **Mounting:** Trunnion, Slipfitter, Extruded arm, Yoke, Knuckle
- **Certifications:** UL Listed; IP65; LM79 tested
- **Rated Life:** 50,000 hours
- **Warranty:** 5 years

### PRODUCT DETAILS

Watts	Input	Kelvin <sup>1</sup>	Lumens <sup>1,2</sup>	Dimming	Beam Angle	CRI
15W	NOT AVAILABLE		1,663			
30W	100-277V	5,000K	3,718	Non-Dimming	90°x120°	>80
50W			6,179			
80W			10,342			

### DIMENSIONS

Watts	Length	Width	Height
15W	4.5"	1.4"	4.6"
30W	7"	1.5"	6.5"
50W	9"	1.7"	7.5"
80W	13.4"	3.4"	11.7"



### MOUNTING OPTIONS

#### YOKE

Available for 30W, 50W, 80W



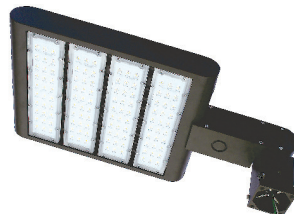
#### KNUCKLE

Available for 15W, 30W



#### SLIP FITTER

Available for 80W



#### TRUNNION

Available for 80W



#### EXTRUDED ARM

Available for 80W

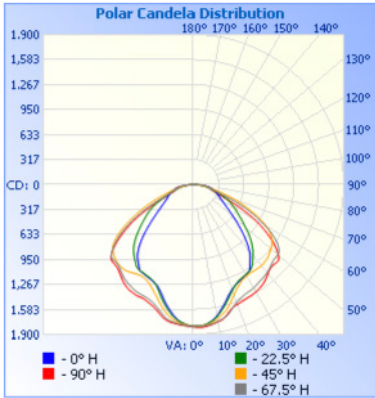


1. CCT range complies with ANSI C78.377-2008

2. Rated average life based on engineering testing and probability analysis.

# LM79 REPORT

LM report based on 80W data



Center Beam fc	Beam Width	
17.0ft	6.21 fc	33.8 ft 56.9 ft
34.0ft	1.55 fc	67.7 ft 113.7 ft
51.0ft	0.69 fc	101.5 ft 170.6 ft
68.0ft	0.39 fc	135.3 ft 227.4 ft
85.0ft	0.25 fc	169.1 ft 284.3 ft
102.0ft	0.17 fc	203.0 ft 341.1 ft

■ Vert. Spread: 89.7°  
■ Horiz. Spread: 118.2°

Zonal Lumen Summary			
Zone	Lumens	% Lamp	% Luminaire
0-30	1,278.6	26.1%	26.1%
0-40	2,135.3	43.5%	43.5%
0-60	3,967.5	80.9%	80.9%
60-90	931.6	19%	19%
70-100	367.7	7.5%	7.5%
90-120	2.1	0%	0%
0-90	4,899.2	99.9%	99.9%
90-180	6.8	0.1%	0.1%
0-180	4,905.9	100%	100%

Lumens Per Zone					
Zone	Lumens	% Total	Zone	Lumens	% Total
0-10	167.6	3.4%	90-100	1.2	0%
10-20	450.2	9.2%	100-110	0.2	0%
20-30	660.7	13.5%	110-120	0.7	0%
30-40	856.7	17.5%	120-130	0.9	0%
40-50	951.1	19.4%	130-140	1.1	0%
50-60	881.2	18.0%	140-150	1.0	0%
60-70	565.2	11.5%	150-160	0.9	0%
70-80	267.1	5.4%	160-170	0.6	0%
80-90	99.4	2.0%	170-180	0.2	0%

## ORDER EXAMPLE:

SL923FLF	—	15W	—	SU	—	5000	—	C	—	120	—	I	—	N	—	O
PRODUCT ID		WATTAGE:		SU=100-277V		CCT:		LENS:		Beam Angle:		I = Internal		N= NON-DIMMING		KM = Knuckle
		15W				50K=5000K		C= Clear		120=120°				D=DIMMING		YM = Yoke
		30W														TM = Trunnion
		80W														EA = Extruded Arm
																SF = Slip Fitter

The Straits Lighting Company is constantly developing and improving its products. For this reason, all product descriptions in this brochure are intended as a general guide, and we may change specifications from time to time in the interest of product development, without prior notification or public announcement. All descriptions in this publication present only general particulars of the goods to which they refer and shall not form part of any contract. Data in this guide has been obtained in controlled experimental conditions. However, The Straits Lighting Company cannot accept any liability arising from the reliance on such data to the extent permitted.