



## STRAITS LED SAFETY PROJECTOR

PID: SL930SAF - 18W RED OR BLUE



### APPLICATIONS:

- SIGNALS DANGER ZONES
- HAZARDOUS WORK AREAS
- CONSTRUCTION SITES

## SPECIFICATIONS:

### FEATURES

- Reduce accidents in hazardous areas
- Suitable for Indoor and outdoor use
- Built in cooling convection design
- Min starting temperature -40°F (-40°C)
- Max starting temperature 185°F (85°C)

### ENERGY DATA

- Driver: 10-80V
- Power Factor > 1.00
- Surge protection

### LED MODULES

- CREE LED chips
- 50,000 hour rated life hours Available
- Kelvin temperature of 60K
- Beam angle: 5° (adjustable 150° with yoke bracket)
- BLUE and RED caution lights available

### ADD ONS

- 150W Driver - 24V
- Extension cord

### MOUNTING

- Yoke mounting

### CERTIFICATIONS

- IP67 Rated
- UL certified

### WARRANTY

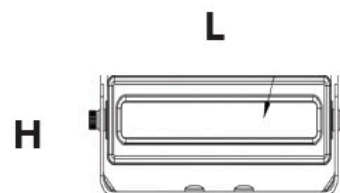
- 2 year warranty

## PRODUCT DETAILS

Product	Input (VAC)	Lumens	Efficacy	CCT <sup>1</sup>	Beam Angle	Rated Life (hours)
18W BLUE	100-277V	1,500	18.49	60K	5°-150°	50,000
18W RED	100-277V	1,500	18.49	60K	5°-150°	50,000

## PRODUCT DIMENSIONS

Length (Inches)	Width (Inches)	Height (Inches)
6.03"	2.54"	2.62"



## INSTALLATION HEIGHT AND BEAM LENGTH

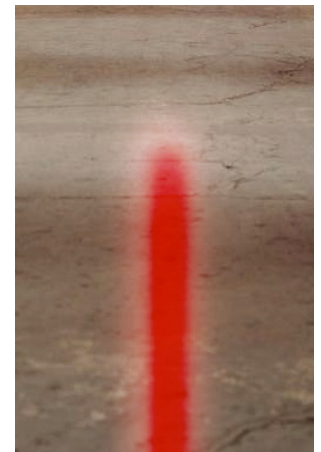
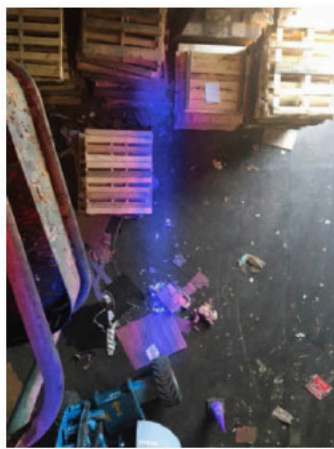
<b>Installed Height</b>	5 ft	10 ft	15 ft
<b>Horizontal Beam Length</b>	10 ft	20 ft	30 ft

The length of the beam is about twice the size of the installed height.



## LED IN ACTION

Increase safety and reduce accidents using the Straits Crane Light. Its bright warning light gives pedestrians a clear visual warning. It is much more effective than sound alarm systems.



## ORDERING GUIDES

ORDER CODE	WATTS	VOLTS	COLOR
SL930SAF	18W	SU	BLUE RED

ORDER EXAMPLE: **SL930SAF - 18W - SU - BLUE**

ORDER CODE	WATTS	VOLTS
SLDR (Driver)	150W	24V

ORDER EXAMPLE: **SLDR - SU - 150W - 24V**